



CRUZIANA

GEOPARK NATURTEJO DA MESETA MERIDIONAL-EUROPEAN AND GLOBAL GEOPARK - MONTHLY REPORT

In this issue: – The Naturtejo Geopark is growing with Penamacor – Portuguese and Spanish Tourism enterprisers networking - Naturtejo as example in the first Nioaque Meeting of Bodoquena-Pantanal Geopark project – Christmas market at Idanha-a-Nova – Reading the Earth Charter for Children...and more!



Olá/Hola/Ciao/Bonjour/Γειά σου/Hallo/God Dag/Salut/Zdravo/Hello/Ahoj/Helo/Helló/ Hei/
Dia duit/Bok/Kaixo/Pozdravljeni/Czesc/Halló/Merhaba

Geo-stories of our places and people: Sobral do Campo

We are back to the Countryside of Castelo Branco, a land of contrasts. Sobral do Campo is right there in the boundary between the absolutely granite plains of Santa Águeda and the absolutely unruly shally hills in the buttresses of Gardunha mountain. The village is in the geological contact, which is also the orographic, pedological and forestry contact, where the Pinewood ends and the Oak forests start, where the sterile soils give up to agriculture and sheep farming. The boundary is, especially, tectonic: Sobral do Campo stands in the upper block of the Mendares-Atalaia do Campo looking to the Southern Meseta. The village is spread in several hills but its influence covers an area of 31,17km², till the Tripeiro River and the quartzite rampart of Serra de S. Brás. There, well nested is the village of Barbaído. Walking down the Tripeiro valley, it is worth to find the legendary Buraca da Moura hollow, an ancient iron and/or gold mine more than 2000 years old. Due to be uncommon in the national geomining frame it is nowadays a geosite from Naturtejo Global Geopark.

In both villages and the surroundings live a total of 366 inhabitants from cheese, olive oil, sausages and honey traditional production. Land products are promoted in the Fair of the Delights of the Countryside that is annually organized at Sobral do Campo. These traditional goods, the landscapes in the Tripeiro valley and mainly crossing S. Brás quartzites at Buraca da Moura and the watermills at Ramalhosa stream are the whole tourism potential of Sobral do Campo not discovered yet.

Recommended Bibliography:
casaisemprefrescos.blogspot.pt

The Editor
Carlos Neto de Carvalho
Scientific Coordinator
Geologist

Front page: (Projecto Objectiva: Geopark, www.naturtejo.com/objectiva)

ACTIVITIES OF THE MONTH



December – Naturtejo Geopark is growing with Penamacor. The Naturtejo General Assembly that was held this month brought major news: the municipality of Penamacor joined the Naturtejo Geopark project. Penamacor is part of the Intermunicipal Community of Beira Baixa, an intermediary organization of increasing importance that manages the territory making the bridge between the National Government decisions and local communities. So it is in a natural way that Penamacor wishes now to become part of a territory recognized internationally under the frame of UNESCO. Penamacor is well known as one of the last refuges for the felid Iberian lynx, one of the most endangered species of mammals in the world. Just to protect the Lynx a Nature Reserve was decreed in the beginning of the eighties and it is a major nature site together with Ramilo mountain that born in Aranhas and develop towards Penha Garcia, Termas de Monfortinho and beyond. Penamacor is less well known for its geomining heritage with particular emphasis for the Presa Roman Gold Mine. Also the granite archipelago of Monsanto inselberge spreads to Penamacor area, right until the town. Penamacor as border town had great importance during the Independency Wars in the seventeenth century. It is the homeland of Ribeiro Sanches, one of the best European doctors during the eighteenth century. The municipal inventory of geosites is now being performed by the geologists of Naturtejo and in a couple of months an application to the European Geoparks Network will be presented.



3 December – Naturtejo as example in Bodoquena-Pantanal Geopark meeting in Nioaque (Brazil).

The first Nioaque Meeting of Bodoquena-Pantanal Project in Brazil was an example of local involvement. The Geopark Office in Nioaque organized a field visit for the local community to Nioaque River under the pretense discover of a new dinosaur tracksite. With the support of the Police several boats were available to make the 5km trip to the site. The traditional “churrasco” lunch was prepared in the farm by the locals with the support of the Municipality and many people finished the day swimming in the river. During the evening a Meeting session opened to the community was set up in municipal hall and many were present filling the hall almost completely. An exhibition on the Bodoquena-Pantanal Geopark project was set up at the entrance. Carlos Neto de Carvalho and Joana Rodrigues were invited to talk about the Naturtejo Geopark and Afrânio Soares, coordinator of the Brazilian Geopark, made a state of art about the Geopark project in the region to show to the community present results and future directions on the research of dinosaur tracksites in Nioaque, the development of educational and tourism activities and local participation.

6 to 8 December – The Spanish Tierra Fuego again in the Geopark. The Spanish tour operator Tierra Fuego is back with 20 tourists for a visit to the Geopark. They hiked together with our tour guides from Actigeo and Ponsulactivo in the Gardunha and the Fossils trail and made part of the Grand Route of Idanha, the Sr^a da Azenha – Monsanto – Idanha-a-Velha.



11 December – Portuguese and Spanish tourism enterprisers networking. The College of Management of Idanha-a-Nova held a networking session for 40 tourism enterprisers and tour operators of the Border territory Euroace – composed the Portuguese regions of Alentejo, Centro and the Spanish region of Extremadura (Spain) – in a session to foster cooperation. Under the Border Project Cavatrans, the network session provided conditions to generate opportunities for business and collaboration among the main actors of the tourism sector. Many enterprisers related with hotels, restaurants, tourism animation, hunting, bull farmers, associations, among others were present. The introduction of the network session was made by Armindo Jacinto, chairman of Naturtejo Geopark, and by Ana Maria Manjón Garcia, of the General Board of Tourism from the Government of Extremadura. Armindo Jacinto called to the joint and net working in order to “obtain concrete results to catch investment, to create wealth and, consequently, to create jobs”. According to Armindo Jacinto, “the Euroace challenge is to develop the territories that are not tourism mature in the present condition. To organize the offer and gain scale through cooperation is the major goal, but keeping the autonomy of each tourism business”.



12 December – 1st Stage of the Anual “Anim'a Rocha” – Classroom .

12 December – 1st Stage of the Anual “Anim'a Rocha” – Classroom. Anim'a Rocha anual Project is back to the school Instituto de S. Tiago, at Sobreira Formosa, in the scope of Biology and Geology. As introduction to the anual Project, Manuela Catana prepared a class for 12 pupils and the teacher from the 11th grade. She introduced the concepts of Geological Heritage and Geconservation and what Naturtejo Geopark is, then presented Portas de Almourão geomonument and talked about the development of Almourão Natural Park. During the class the pupils analysed rock samples from the Naturtejo Geopark, the geological, geotourist and tourist maps, and the remaining stages of the Anual Project were discussed to be implemented in the 2nd and 3rd school periods.

13 December – Countryside Tourism Federation Governing Body is elected. The Countryside Tourism Federation was just started with the election of the Governing Body in Santa Bárbara de Nexe, Faro, Southern Portugal. This institution was born and has headquarters in the Naturtejo Geopark. The associated organizations represent the whole country – both mainland and the autonomic regions of Azores and Madeira –, and so the Federation is assumed as a leading body in countryside tourism activity representing half a million beds in Portugal. The Governing Body is composed by Countryside Hotels of Portugal (Cândido Mendes) as president, and the vice-president Naturtejo (Armindo Jacinto); vowels are TuriPortugal (Luís Galvanito), Heranças do Alentejo (Francisco Zambujinho) and Garvetur (Reinaldo Teixeira). The General Assembly is composed by Casas Açorianas (João Comba), presidente; secretary Animar (Eduardo Figueira) and vowel: Coudelaria Henrique Abecasis (Tiago Abecasis).

The State Secretary of Tourism, Adolfo Mesquita Nunes, was represented in the ceremony by the President of Algarve Tourism, Desidério Silva.

The Countryside Tourism Federation was founded by ADERE - Peneda Gerês, Hotéis Rurais de Portugal, Coudelaria Henrique Abecasis, TuriPortugal, Naturtejo, Casas Açorianas, Madeira Rural, Heranças do Alentejo and Garvetur. To these organizations several others were joined meanwhile, such as Casas Brancas, ANIMAR and Abrottea which, together, represent more than 700 associates.

The action plan of the elected governing body wants to implement a national orientation enabling to establish integrated programs, protocols and actions for promotion and selling in the international trade.

17-31 December – Christmas at the Idanha-a-Nova Market. The municipality of Idanha-a-Nova intends the revitalize the traditional municipal market by fostering events where high quality local products can be sold. Taking advantage of the Christmas season, when locals join the families and prepare great parties, the municipality prepared an agenda of animation that brought new publics to the municipal market. Many people were shopping local products and sustaining local production and local economy.



20 December – Field trip to the Biogeodiversity of the Erges Gorge-Segura. The Educational Office of Idanha-a-Nova and Naturtejo Geopark organized a fieldtrip for 20 children and 4 monitors from the Freetime Activities of the Christmas Holidays of Idanha-a-Nova. Manuela Catana and Hugo Oliveira guided them in the Biodiversity Interpretative Centre “Lands of Idanha” and the geomonument Erges gorge at Segura. They also visited the Valado Farm to see a good example of the use of biodiversity, by producing “green” soaps and oils.



20 December – Reading the Earth Charter for Children under the Christmas Market . This workshop was made for 12 children and 4 monitors from the Freetime Activities of the Christmas holidays in Idanha-a-Nova. It occurred during the Christmas Market organized by the Municipality of Idanha-a-Nova with the support of Naturtejo Geopark. Altogether they read the Earth Charter for Children principles. Then they built individually, with the help of the monitors and Hugo Oliveira, small Christmas trees by reusing cereals boxes and sticks of satay. Finally, everybody sang the song “That’s the park, Naturtejo Geopark” and “A Tree, a Friend” with Manuela Catana playing guitar, bringing a happy moment to the visitors of the Christmas Market.



IMPACT OF GEOPARK IN MEDIA

TV

SBT Brasil (national TV) – New dinosaur footprints are located in Nioaque

Newspapers & www

19 December (Reconquista) – Portuguese and Spanish – enterprisers discuss tourism at Idanha

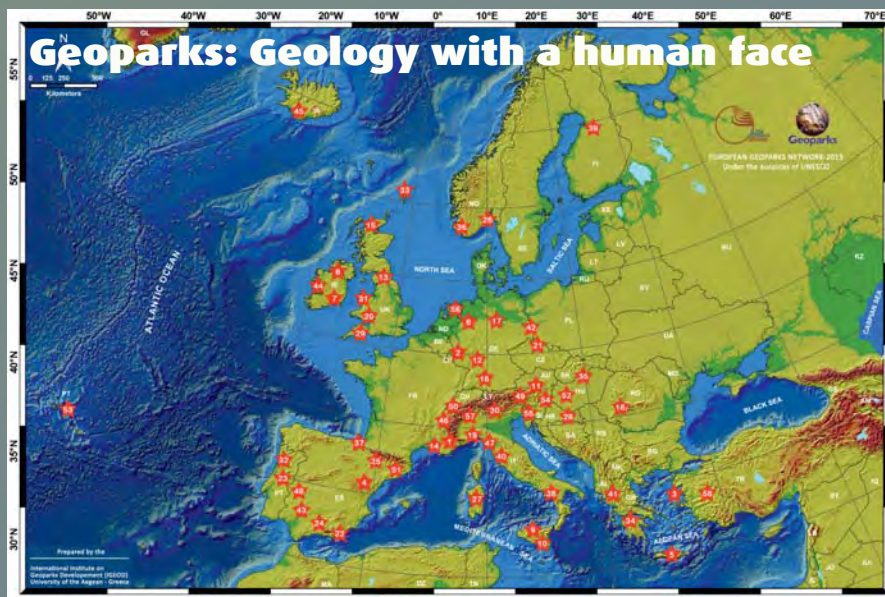
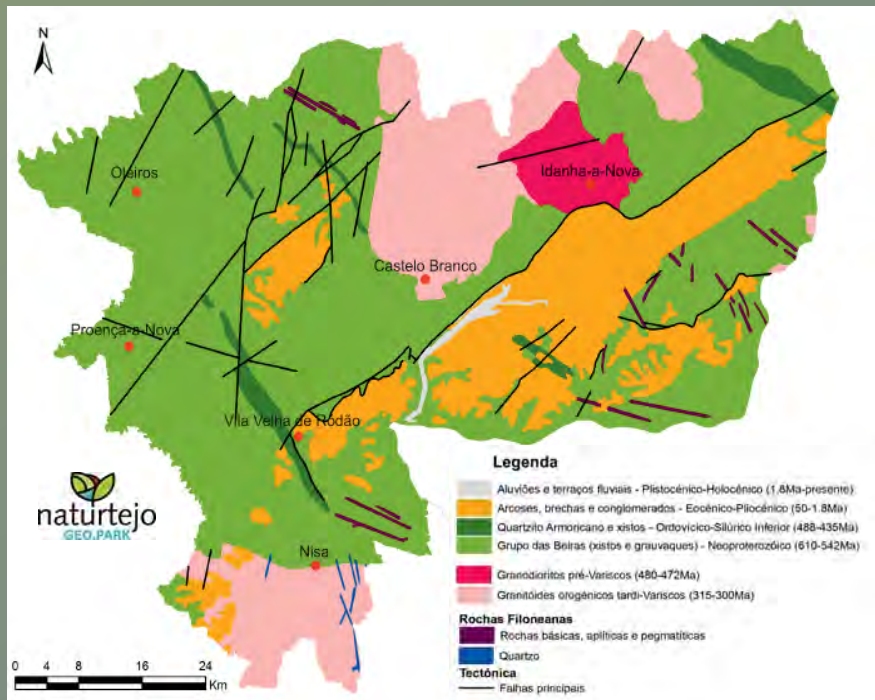
19 December (Reconquista) – Rural Tourism with headquarters in Idanha

19 December (Reconquista) – Rural Tourism Federation has governing body



PROMOTION FOR THE GENERAL PUBLIC





CRUZIANA

GEOPARK NATURTEJO DA MESETA MERIDIONAL-EUROPEAN AND GLOBAL GEOPARK MONTHLY REPORT

www.geoparknaturtejo.com